

# WL Coller

Manufacturing Stationers & Paper Merchants  
01617995353

## Designed to perform and built to last.

### EASYMOUNT WIDE FORMAT SYSTEMS



Car Wraps



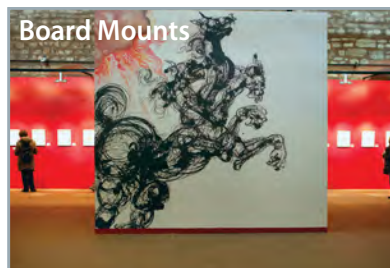
Roll-Up Banners



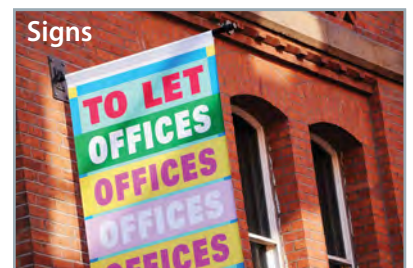
Window Graphics



Board Mounts



Signs



Bike Wraps



Pop-Up & Exhibition Graphics



Works with BOSS Film



RELIABILITY

QUALITY

PERFORMANCE

DESIGN

SPEED

INNOVATION

EASE

SUPPORT

Easymount® laminators are designed to perform and built to last.

Their advanced features allow you to laminate, mount and encapsulate too.

Designed in-house by us, the Easymount® range gives your business extra capacity by allowing you to offer your customers a complete service that you previously had to outsource.



▲ EM-1600SH

# Easymount gives you the flexibility and versat

## Cost effectiveness

The versatility of Easymount® laminators makes them incredibly cost-effective, meaning you can now truly offer a one-stop shop for print and finishing.

The range includes everything from entry-level models for those still finishing jobs by hand, to professional heavy-duty models that will cope with every application all day, everyday.

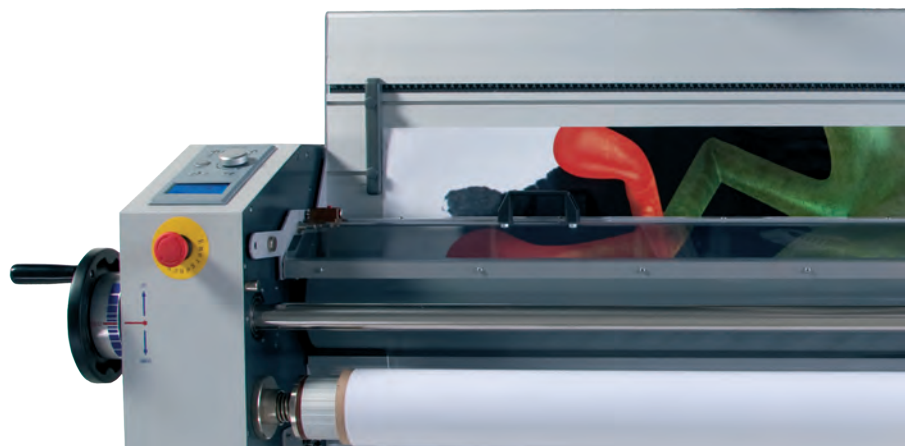
## Lamination in depth, control in abundance

The range of Easymount® laminators covers every job you need.

As they're designed in-house by our experts, we can make sure that everything about them is aimed at helping you to do that job more efficiently, more cost-effectively and more reliably.



▲ EM-1600SH Rear View





### ◀ Get stuck in

You can apply more than just laminates – the Easymount® range allows you to also lay down application tapes and vinyls, removing the need for squeegeeing by hand.

The feed table also lifts up, making it easier to load rolls of material, increasing effectiveness and minimising hassle.

### Fingertip control ▶

Our exclusive patented multilingual control panel is simple and very easy-to-use.

It's available in English, French, German, Spanish and Italian.

Anyone can use it with the minimum of training, and it allows you to take complete control.

Whatever you need, you can achieve with absolute accuracy, quickly and easily.



ility you need.



### ◀ Easymount by name, Easymount by nature

Designed for simple, high quality results in a matter of minutes with the minimum of fuss and training.

They're also extremely efficient – our patented pressure gauge handle ensures that you choose the correct setting every time quickly and easily.

Anyone can quickly operate an Easymount®.

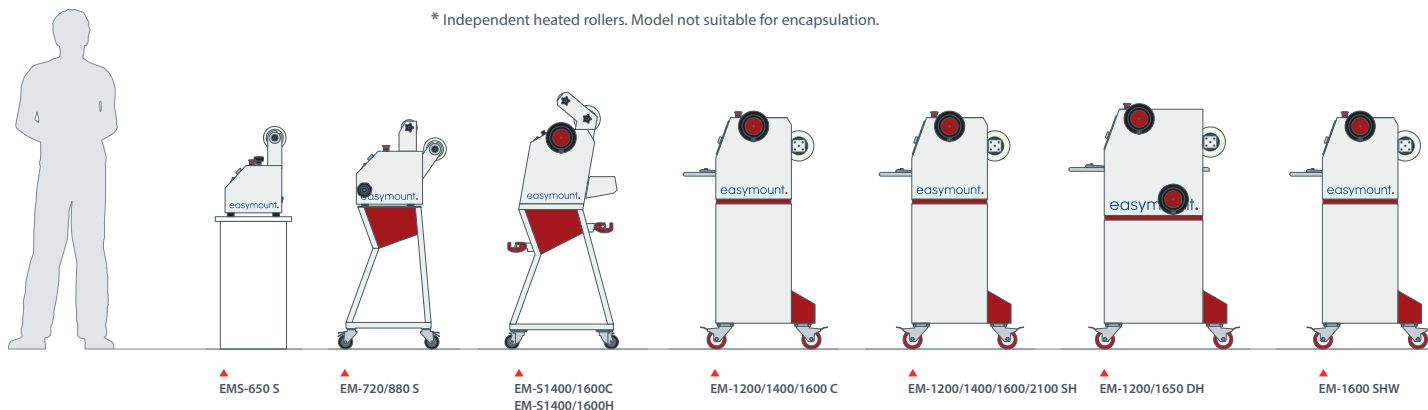


### ▶ Covering every angle

When you are preparing a longer run, the optional take-up unit enables you to work with reel-to-reel lamination, saving time and making it more efficient, too.

“ My Easymount has transformed my business. I can finish the job when I’m ready, without having to call on a specialist finisher. ”

- large diameter rollers
- solid heavy duty construction
- magic eye safety feature



## Series quick selector

Model suffix - Eg. EM-1600 DH

Code	Maximum Film Width	Sign	Cold	Single Hot	Double Hot	SHW
EMS-650	650mm	S	-	-	-	-
EM-720	720mm	S	-	-	-	-
EM-880	880mm	S	-	-	-	-
EM-1200	1200mm	-	C	SH	DH	-
EM-1400	1400mm	S	C	SH	-	-
EM-1600	1600mm	S	C	SH	-	SHW*
EM-1650	1650mm	-	-	-	DH	-
EM-2100	2100mm	-	-	SH	-	-

\* Independent heated rollers. Model not suitable for encapsulation.

## Specifications

	Sign 650	Sign 720/880	Sign Cold 1400/1600	Sign Hot 1400/1600	Cold 1200/1400/1600	Single Hot 1200/1400/1600/2100	Double Hot 1200/1650	SHW 1600
Laminating Speed (m/min)	5	3	5	5	6	6	3.9	6
Max Width (mm)	650	720/880	1420/1620	1420/1620	1200/1400/1600	1200/1400/1600/2100	1200/1650	1600
Mounting Thickness (mm)	15	15	25	25	25	25	25	25
Roller Diameter (mm)	65	70	130	130	112/112/130	112/112/130/130	112/130	130
Warm-up Time (mins)	-	-	-	10	-	10	15	15
Hot Roller Heater System	-	-	-	Infrared	-	Internal Infrared	Int. Infrared	Int. Infrared
Laminating Temperature Range (°C)	-	-	-	0-45	-	0-60	0-130	0-130
Control Panel	LED	LED	LED	LED	Digital	Digital	Digital	Digital
Pressure Adjustment	Manual	Manual	Manual	Manual	Manual/Gauge	Manual/Gauge	Man./Gauge	Man./Gauge
Film Core (mm)	77	77	77	77	77	77	77	77
Power Supply AC (V)	220/240	220/240	220/240	220/240	220/240	220/240	220/240	220/240
Power Supply Required (Amps)	13	13	13	13	13	13	32	32
Power Consumption (W)	50	50	38	1000/1200	50	970/1310/1500/1800	3950/5150	5000
Overall Dimensions - Width (mm)	850	940/1100	1846/2046	1846/2046	1790/1990/2190	1790/1990/2190/2650	1700/2170	1990
Overall Dimensions - Depth x Height (mm)	300x470	650x1250	550x1365	550x1365	650x1255	650x1255	785x1255	650x1255
Gross Machine Weight (kg)	33	65/75	136/156	136/156	185/210/245	185/210/245/280	270/365	205
Warranty	1 year	1 year	1 year	1 year	1 year	1 year	1 year	1 year

“ Having our own laminator on-site is so much more cost-effective than outsourcing. ”

## Accessories

	Sign	Sign Cold / Hot	Cold	Single Hot	Double Hot	SHW
Additional Mandrels	-	•	•	•	•	•
Take-up Unit	-	S	•	•	•	•
Dust Cover	-	-	S	S	S	S

• Yes - No S Standard

CONTROL

FRESH

EFFECTIVENESS



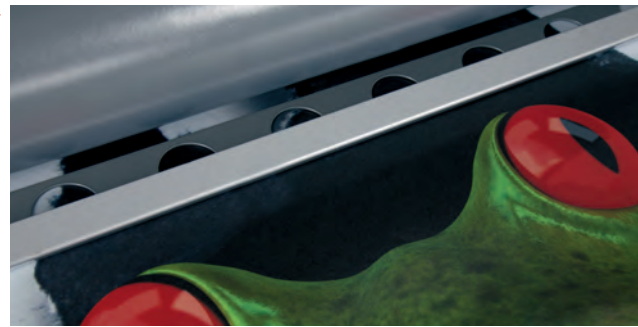
▲ EM-S1600H



▲ EM-880

### Catering for every taste ▶

The Easymount® range allows you to laminate a whole range of jobs you previously had to outsource. So you can laminate shop signs, exhibition stands, roll-up banners and vehicle wraps – you can even mount on Foamex board up to 25mm thickness – in-house with ease.



▲ EM-2100SH

### Up to 2100mm wide

You've invested in a new wide-format printer for your business. For outdoor signage, display graphics and vehicle wraps, you'll need a wide-format laminator to protect your print.

The range goes up to 2100mm, so no matter what you print, Easymount® has you covered.



Premium Brand Laminating Supplies

“ It’s true that they provide excellent machines, but their supplies are also second to none. Whatever you need, they’ll get it to you. ”

- Boss® premium brand pressure sensitive range
- various finishes available:  
Gloss  
Crystal Matt  
Semi-Matt (lustre)  
Sandtex  
Anti-Graffiti
- 3" core
- 100m rolls

## BOSS pressure sensitive films

Film Finishes

Roll Width	Roll Length	Mount	Gloss	Crystal Matt	Flat Matt	Semi-Matt (lustre)	Sandtex	Anti-Graffiti
650mm	50m	•	•	•	•	•	-	-
880mm	100m	S	•	•	•	•	•	-
1040mm	100m	•	•	•	•	•	-	-
1300mm	100m	•	•	•	•	•	-	•
1370mm	100m	-	•	•	•	•	-	-
1520mm	50m	•	•	•	•	•	-	•

• Yes - No S Special order Non-exhaustive list. Consult us for full stock and availability.

### A cut above the rest ▶

Why waste film when we can provide you with custom rolls? Our film supplies can be tailored – literally – to suit your specific needs with the ability to log cut bespoke roll widths to your specifications.



MATRIX LAMINATING SYSTEMS



EASYMOUNT WIDE FORMAT SYSTEMS



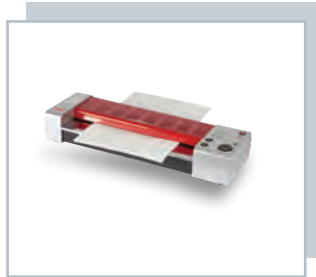
MAGNUM BINDING SYSTEMS



MAGNUM CREASING SYSTEMS



LINEA ENCAPSULATION SYSTEMS



PEAK POUCH LAMINATING SYSTEMS



TRIMFAST TRIMMING & CUTTING SYSTEMS



BOSS FILM SUPPLIES

We design and manufacture a wide range of laminating systems, specialising in function, style and reliability.

For years, we have been leading the field with our innovative product development, successfully building our brands and customer relationships that help us to introduce unique products in the marketplace.

So if you're looking to improve your finishing, start by calling us.

WL Collier Ltd

Units 1-4 Holloway Drive, Wardley Industrial Estate, Walkden, Manchester, M28 2LA

0161 799 5353 paper@wllcoller.com

wllcoller.co.uk

# CHARTA<sup>®</sup>

Lamination Pouches



## Gloss Lamination Pouches

Full encapsulation of the media is possible with a 3mm all around the edge margin allowing the film to bond front to back. We hold stocks of A3 and A4 lamination pouches.

Call for A2 availability

## Sizes & Thickness

A4 216 x 303mm 150 micron

A4 216 x 303mm 250 micron

A3 303 x 426mm 150 micron

A3 303 x 426mm 250 micron

Sold in packs of 100. The thickness given is for both sides of the pouch added together, so for the 150u it is 75u each side, and for the 250u pouches, 125u each side.

WL Coller Ltd

Units 1-4 Holloway Drive, Wardley Industrial Estate, Walkden, Manchester, M28 2LA

0161 799 5353 [paper@wllcoller.com](mailto:paper@wllcoller.com)

[wllcoller.co.uk](http://wllcoller.co.uk)



# CHARTAIN

Aqueous Inkjet media

WL Coller  
paper@wllcoller.com  
0161 799 5353

## Matt Media

- 130gsm Canon Premium Paper
- 170gsm Charta Premium Matt
- 180gsm Canon Smart Matt

## Banner and Film

- 80u Canon Universal Vinyl SA 20m
- 188u Charta Self Adhesive Vinyl
- 185u Charta Matt Lightblock
- 200u Charta Textured Lightblock
- 200u Canon Polyprop Paper
- 200u Charta Backlit Film
- 300u Charta Matt Lightblock
- 366u Charta Evolon Poly-Fibre
- 375u Charta Scrim Banner 18m

## Photographic Media

- 170gsm Charta Photo Satin
- 170gsm Charta Photo Gloss
- 190gsm Canon Instant Dry Satin
- 190gsm Canon Instant Dry Gloss
- 260gsm Canon Instant Dry Satin
- 260gsm Canon Instant Dry Gloss

## Width Availability Key

- 610mm
- 914mm
- 1067mm
- 1270mm
- 1372mm
- Other

## Fine Art Media

- 230gsm Charta Creative Canvas Matt
- 245gsm Charta Photo Glacier 25m
- 245gsm Charta Photo Metallic 25m
- 250gsm Charta Pyramid Satin
- 375gsm Canon Image Canvas 18m

## Length

Available as minimum 30 or 30.5m unless stated.

# Canon

CHARTAIN  
WIDE FORMAT MEDIA

